

Cardiac cancer-early detection and resection

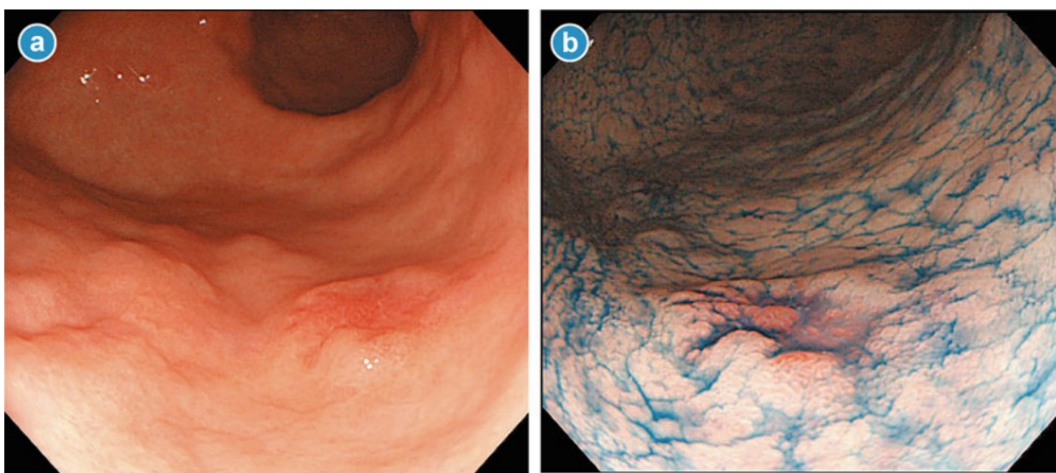
Focus on Optical Enhancement Image and Endoscopic Staging

Mojgan Forootan, MD , Proffesor of Gastro entrology

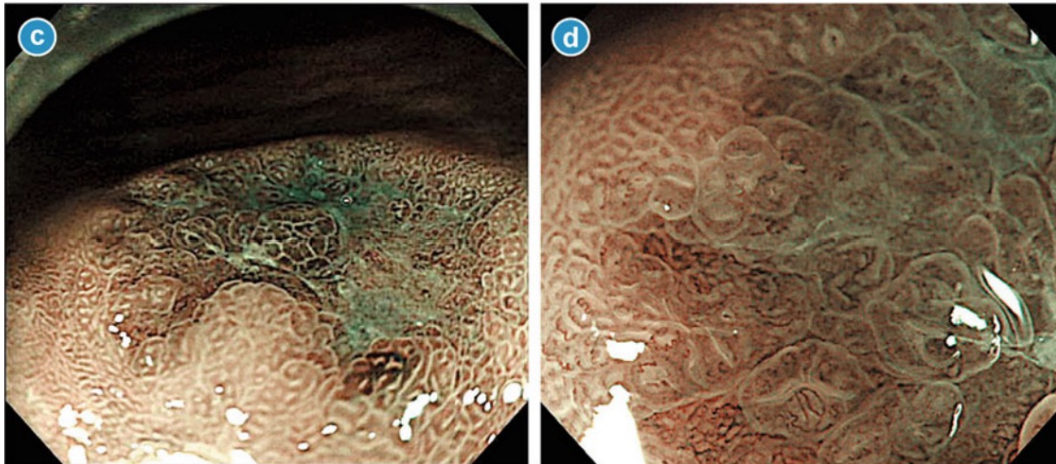
Absolute & Expanded Indications for Endoscopic Resection

Invasion depth Tissue-type	Intramucosal cancer				Minute Submucosal Cancer	
	UL (-)		UL (+)		≤SM1	SM1<
	≤20 mm	20 mm <	≤30 mm	30 mm <	≤30 mm	Any size
Well differentiated adenocarcinoma (WDA)						
Poorly differentiated adenocarcinomas (PDAs)						

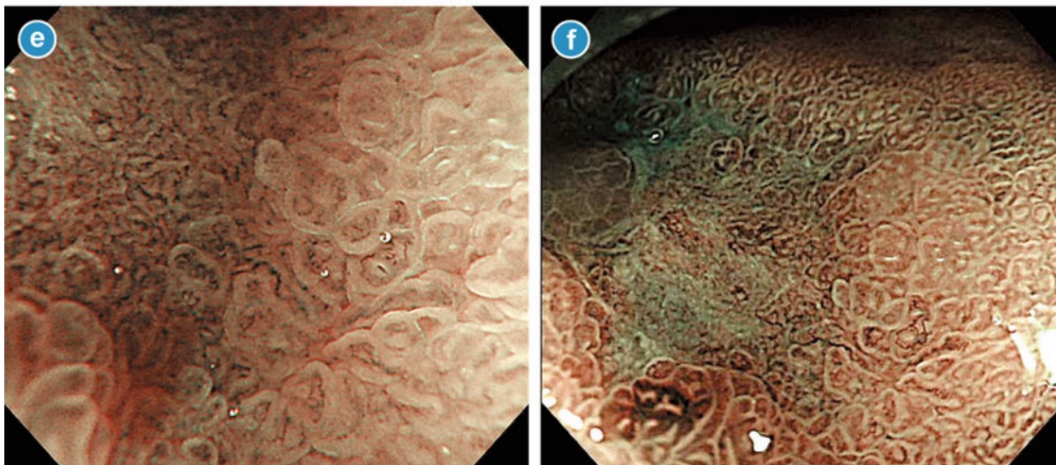
- Absolute indication for EMR/ESD
- Expanded indications for ESD
- Possible expansion for ESD
- "out of indications" for EMR/ESD



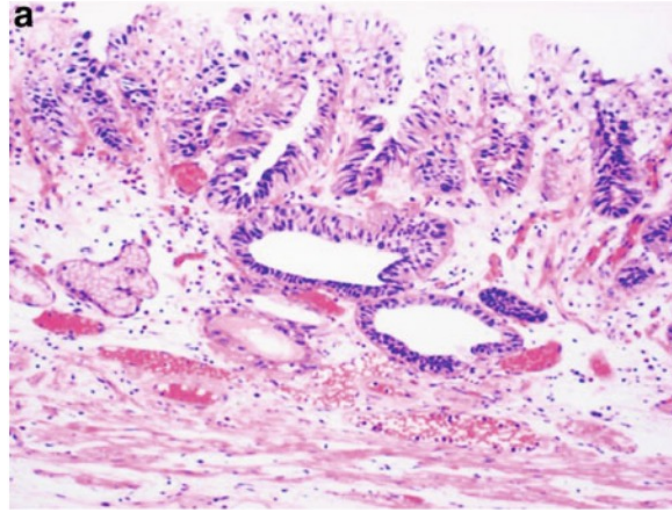
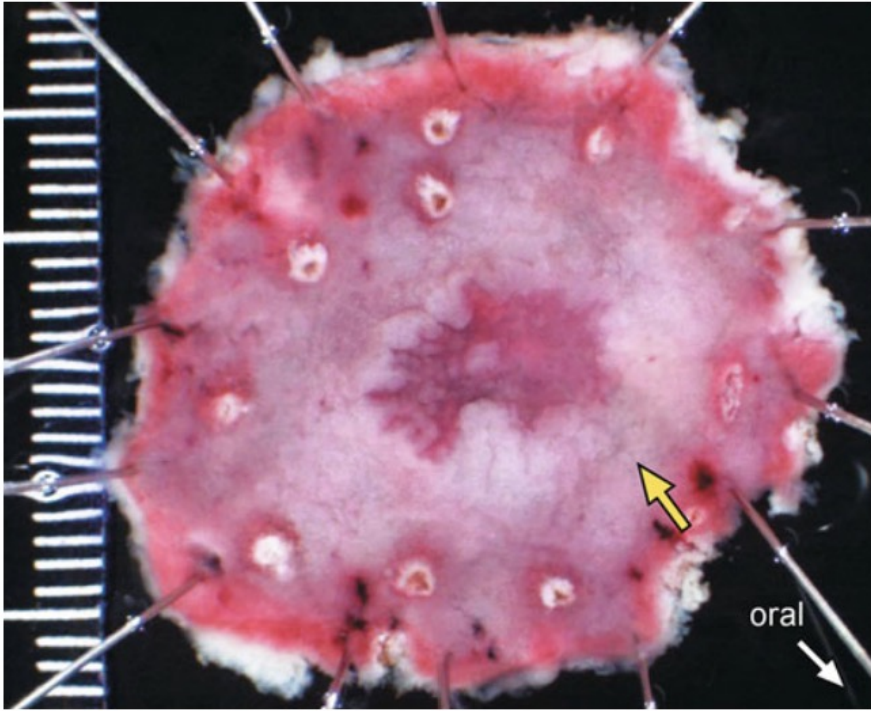
WLE & spraying indigo carmine



NBI Magnified Endoscopy



A reddish depressed lesion with irregular, size – variable and fusion of some villi and marginal protuberance (jaggy and irregular)



Well differentiated gastric adenocarcinoma, 0-IIc + IIb, with an invasion depth of M